



Plot 6, 5 Brunswick Place, Easthorpe,
Leicestershire, NG13 0JP

£595,000
Tel: 01949 836678

 **RICHARD
WATKINSON**
PARTNERS
Surveyors, Estate Agents, Valuers, Auctioneers

- Exciting Release of Phase Two The Paddocks
- 4 Bedrooms, 2 Bath/Shower Rooms
- 39 Plots in Total
- Triple Glazing
- Car Charging Point & Photovoltaics
- Plots 6 & 7 - 1,710 sq.ft. - The Clapton
- Double Garage
- High Efficiency Homes
- Enhanced Insulation & Air Source Heat Pump
- Ease of Access to Local Amenities

We have great pleasure in offering to the market "EASTHORPE GREEN". A unique, considered development of 39 beautifully designed and well thought out homes, situated within the highly regarded hamlet of Easthorpe. A pretty village situated within the Vale of Belvoir and adjacent to the well served village of Bottesford, whose wealth of amenities are only a short walk away.

The development is provided by a highly regarded, family owned local developer, GUSTO HOMES. Known for their energy efficient and creatively designed range of high quality bespoke dwellings, as well as a reputation for after sales service and care; Gusto Homes have been providing stunning homes for almost three decades. This site will be of no exception and will have a focus on high efficiency, with the predominantly new build element of the site benefiting from air source heat pumps, ground floor underfloor heating (to the two storey new houses), triple glazed windows, roof mounted photovoltaics, car charging points and enhanced insulation. In addition there will be premium appliances paired with modern kitchens and sanitary ware, with early reservation providing clients an element of colour choices for kitchen door finishes, tile and floor coverings.

The development will be released in several phases, predominantly of new build construction and includes in later stages a selection of single and 1 1/2 storey homes, specifically for the over 55's.

The release of phase two (The Paddocks), brings to the market eight beautifully appointed three and four bedroom homes in a variety of designs, again all finished to a high standard. These properties are expected to near completion in spring/summer 2026, with early reservation coming highly recommended.

Easthorpe is a small hamlet adjacent to and within walking distance of the village of Bottesford which is well equipped with amenities including primary and secondary schools, a range of local shops, doctors and dentists, several public houses and restaurants, railway station with links to Nottingham and Grantham which gives a fast rail link to London's Kings Cross in just over an hour. The A52, A46 and A1 are also close by providing excellent road access.

FAMILY/DINING ROOM
15'2 x 19'6 (4.62m x 5.94m)

KITCHEN
11'3 x 11'10 (3.43m x 3.61m)

UTILITY
6'0 x 8'10 (1.83m x 2.69m)

LIVING ROOM
15'4 x 12'5 (4.67m x 3.78m)

HOME WORKING
8'3 x 10'5 (2.51m x 3.18m)

BEDROOM 1
11'1 x 12'1 (3.38m x 3.68m)

BEDROOM 2
11'3 x 11'10 (3.43m x 3.61m)

BEDROOM 3
10'5 x 11'10 (3.18m x 3.61m)

BEDROOM 4
12'1 x 7'1 (3.68m x 2.16m)

DOUBLE GARAGE
19'8" x 18'0" (6m x 5.5m)

ADDITIONAL NOTES
Please note, all images are for guidance only and give an indication of the proposed finishes but may not represent exactly the completed product. Internal images are taken from other Gusto Homes sites but may not show the same room size or configuration as the proposed plots at Easthorpe Green. Exterior elevation images are computer generated and are for guidance only but are indicative of each design.

Due to the nature of the conversions of Easthorpe Lodge, the specifications on these three units will differ from the new build dwellings. i.e. central heating system with radiators to ground and first floors, as opposed to the new build two storey homes which will have underfloor heating to the ground floor and radiators to the first. The single storey homes (coming in phase three) will have radiators as opposed to underfloor heating.

Further details can be provided regarding individual plots and specification, upon request.

The properties will be on mains drainage, electric and water. The new builds will have air source heat pumps and photovoltaics, as well as triple glazed windows and ten year warranties (warranty not applicable to the conversions). The three lodge conversions will feature double glazed windows and gas central heating.

Please note:- As is common with similar developments, there will be a resident owned management company for communal areas of the site. Gusto Homes will assist with the setup of this and provide the necessary support to facilitate its introduction. This will all be set up and collected once the managing agents have been set up and the management company activated, later in the site. The developers have informed us that the service charge will be around £250 per year, around £20 per month. Basing this off their other developments that are set up in a very similar way with a similar amount of communal space etc.

RESERVATION FEE
This reservation fee of £1,000 will hold your chosen plot until 3 months prior to the anticipated build completion date, by this time you must be in a position to proceed (i.e. sold or accepted an offer on your own property / have funds in place). If you are not in a position to proceed at this stage, Gusto Homes (Easthorpe) LLP will return the plot to the open market, if this is the case you will be offered the opportunity to transfer your reservation deposit to a later plot or have a partial refund.

The deposit shall be treated as part payment of the Price Agreed.

The deposit is subject to a 14 day cooling off period during which time the deposit will be refunded fully should the buyer change their mind. After that period, if the buyer wishes to withdraw from the purchase then 50% of the deposit will be refunded if this is prior to contract paperwork being issued, after this point the deposit shall become forfeit and belong to the seller.

ADDITIONAL INFORMATION
Please see the links below to check for additional information regarding environmental criteria (i.e. flood assessment), school Ofsted ratings, planning applications and services such as broadband and phone signal. Note Richard Watkinson & Partners has no affiliation to any of the below agencies and cannot be responsible for any incorrect information provided by the individual sources.

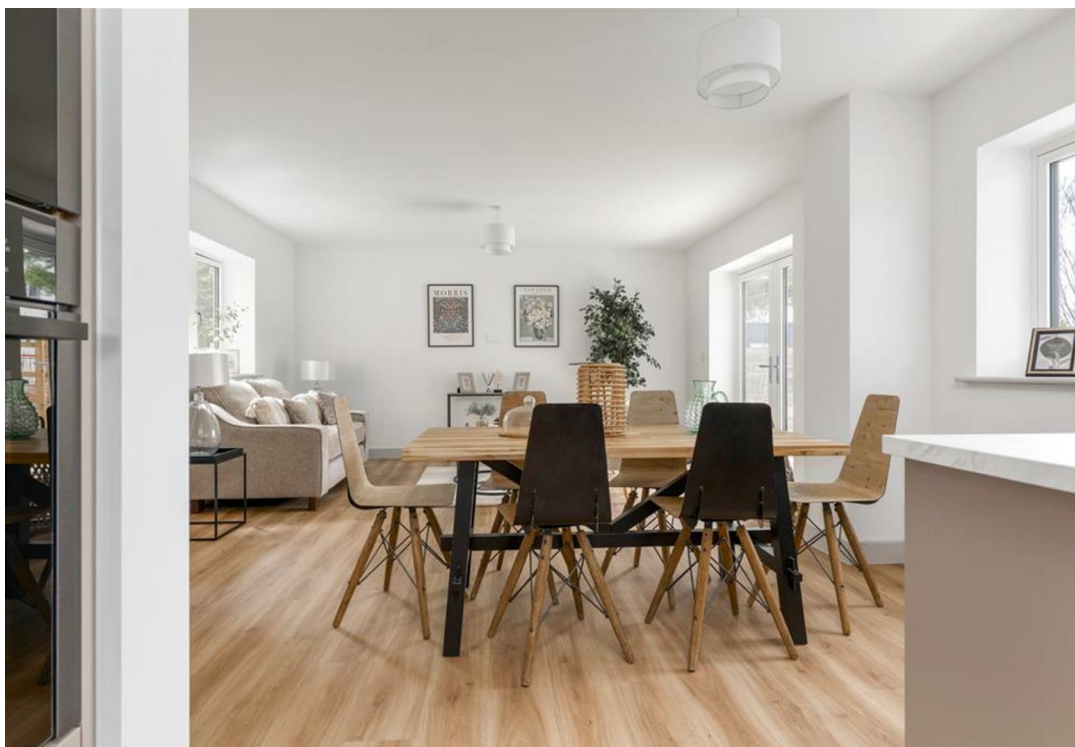
Flood assessment of an area:_
<https://check-long-term-flood-risk.service.gov.uk/risk#>

Broadband & Mobile coverage:-
<https://checker.ofcom.org.uk/en-gb/broadband-coverage>

Radon Gas:-
<https://www.ukradon.org/information/ukmaps>

School Ofsted reports:-
<https://reports.ofsted.gov.uk/>

Planning applications:-
<https://www.gov.uk/search-register-planning-decisions>







INCLUDED IN PRICE OF A GUSTO HOME AS STANDARD

GLSTO
Homes

[illegible]

HOUSE TYPE KEY

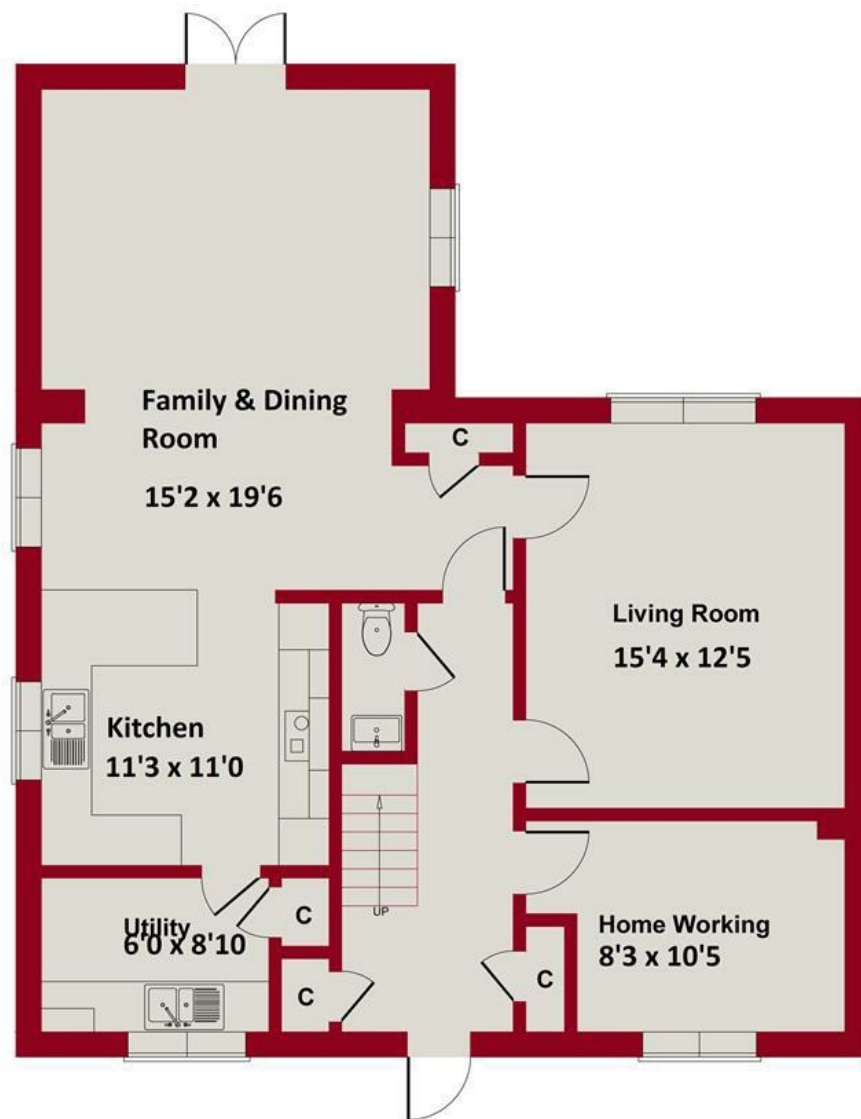
- The Osborne, 2 bedroom bungalow
- The Hendrix, 2 bedroom bungalow
- The Miller, 2 bedroom bungalow
- The Marley, 3 bedroom bungalow
- The Minogue, 3 bedroom house
- The Franklin, 3 bedroom house
- The Hucknall, 4 bedroom house
- The Presley, 4 bedroom house
- The Clapton, 4 bedroom house
- The Lennon, 4 bedroom house
- The Charles, 5 bedroom house
- The Armstrong, 5 bedroom house
- The King, 5 bedroom house



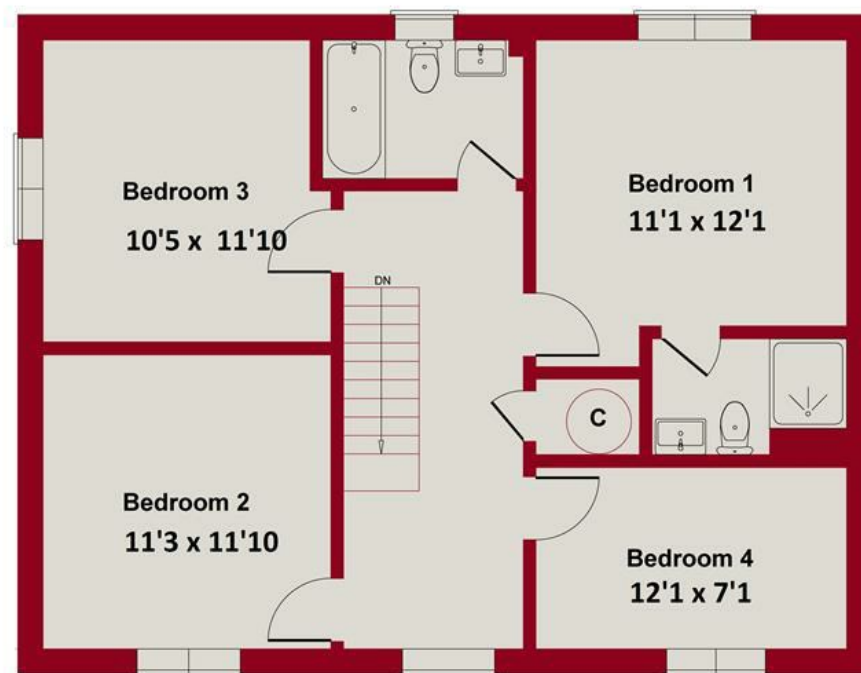
SITE MASTERPLAN


EASTHORPE GREEN
 Bottesford

GUSTO



GROUND FLOOR



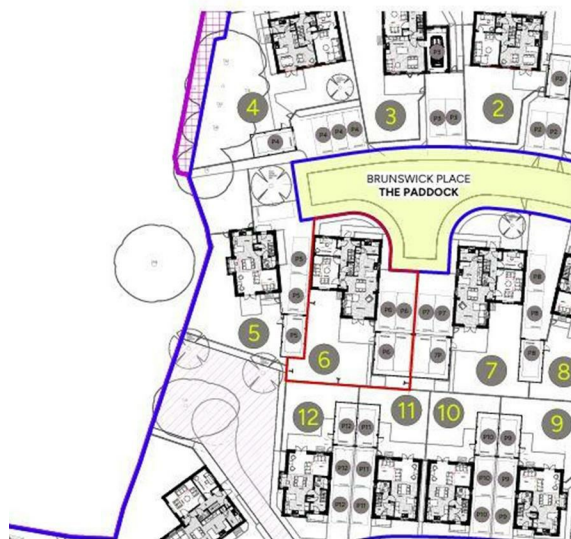
FIRST FLOOR

SKETCH PLAN FOR ILLUSTRATIVE PURPOSES ONLY

All measurements walls, doors, windows, fittings and appliances, their sizes and locations, are approximate only. They cannot be regarded as being a representation by the seller, nor their agent.

Produced by Potterplans Ltd. 2025





PLOT 6 - The Clapton

Demise and Site Layout Plan



GUSTO
Homes

Energy Efficiency Rating		
	Current	Potential
Very energy efficient - lower running costs		
(92 plus) A		
(81-91) B		
(69-80) C		
(55-68) D		
(39-54) E		
(21-38) F		
(1-20) G		
Not energy efficient - higher running costs		
England & Wales		EU Directive 2002/91/EC

Environmental Impact (CO ₂) Rating		
	Current	Potential
Very environmentally friendly - lower CO ₂ emissions		
(92 plus) A		
(81-91) B		
(69-80) C		
(55-68) D		
(39-54) E		
(21-38) F		
(1-20) G		
Not environmentally friendly - higher CO ₂ emissions		
England & Wales		EU Directive 2002/91/EC



These particulars, whilst believed to be accurate are set out as a general outline only for guidance and do not constitute any part of an offer or contract. Intending purchasers should not rely on them as statements of representation of fact, but must satisfy themselves by inspection or otherwise as to their accuracy. No person in this firm's employment has the authority to make or give any representation or warranty in respect of the property. Any fixtures and fittings not mentioned in these details are excluded from the sale price. No services or appliances which may have been included in these details have been tested by the selling agent and therefore cannot be guaranteed to be in good working order.

As part of the service we offer we may recommend ancillary services to you such as mortgage advice, solicitors and surveyors which we believe will help with your property transaction. We wish to make you aware that should you decide to proceed we may receive a referral fee or equivalent. This could be a fee, commission, payment or other reward. We will not refer your details unless you have provided consent for us to do so. You are not under any obligation to provide us with your consent or to use any of these services. You are also free to choose an alternative provider.

Thinking of selling? For a FREE no obligation quotation call 01949 836678



Richard Watkinson & Partners is the trading name of Richard Watkinson Ltd.
Registered in England. Ltd Registration number: 07140024

10 Market Street,
Bingham NG13 8AB
Tel: 01949 836678
Email: bingham@richardwatkinson.co.uk



Surveyors, Estate Agents, Valuers, Auctioneers